

# Splashpanel Narrow PVC wall panelling

## INSTALLATION, CARE & MAINTENANCE



# Splashpanel Narrow PVC wall panelling. Installation, care & maintenance

## INSTALLER & OWNER RESPONSIBILITIES:

The performance of your SplashPanel PVC Waterproof Panelling product is closely linked to the quality of the installation of it and good care & maintenance being carried out on it following installation. It is the installer's responsibility to ensure that the installation is carried out as per the following installation instructions in all respects.

No claims for product failure will be accepted if the product is incorrectly installed and or installation errors made.

## RECOMMENDED TOOLS, EQUIPMENT & INSTALLATION ACCESSORIES:

- Fine tooth saw and or Utility knife
- PVC Silicone Sealant
- Gloves & eye protection glasses
- Straight Edge
- PVC Panel adhesive
- PVC Antibacterial Cleaner
- Tape Measure

## 1. PRE-INSTALLATION PROCEDURES AND PRODUCT LIMITATIONS

All your PVC wall panels must be individually checked for any quality issues prior to installation of the panels.

- Please check carefully that the same width panels are from the same batch prior to installation and that the panels are an acceptable colour match. A batch number can be found on the product packaging and the back of each panel. Slight colour variation can occur between panels and batches, therefore all panels must be checked for colour uniformity before fitting. No claims for colour variance between panels will be accepted following installation of the panels. Slight "telegraphing" of the extruded sheet profile and minor lacquer imperfections can be visible at the panel surface and is normal for this product.
- PVC wall panels are intended solely for use on internal walls only.
- PVC panels are to be installed using PVC panel adhesive, it is therefore important to ensure that all surfaces to which the adhesive will be applied are sound, clean, dust free, dry, plumb and even. Any paints, sealers or coatings of any kind on the intended installation surface must be checked for soundness and adhesion suitability and if in doubt should be removed before the adhesive is applied.

**If there are any concerns regarding the PVC panels in any respect at the product checking and pre-installation stage do not install the panels and contact your PVC panel supplier and advise of, and clarify, your concerns.** The associated product manufacturing defect warranty will be void, and no product fault claims will be accepted, for any form of defect complained of that was visible at the point of installation.

## 2. INSTALLATION OF PANELS AND PROFILES

- PVC Panels can be adhered directly onto to flat, plumb, sound and smooth wall.
- If the installation sub surface is uneven install an appropriate, (500mm centred horizontal & vertical battens), timber batten frame system to the wall to ensure a flat, plumb and level frame base is present to adhere the PVC panels to.
- Where any items such as sink basins, toilet cisterns, shower units etc. are to be fixed through the panels install supports battens into the framing system to support and fix these items to.
- Installation of your PVC panels should commence by attaching a scotia trim or end U cap as required to the wall starting point.
- Mechanically fix or adhere the end cap / starting profile to the wall/ batten and apply a full length unbroken bead of PVC silicone sealant into the channel of the starting profile.
- Apply a continuous **thick bead** of adhesive around the periphery edge of the panel (50mm in from the panel edge), followed by further horizontal beads of adhesive spaced at 450mm centres across the back of the panel. Angle the panel edge fully into the previously fixed starting profile trim and firmly locate the panel onto the wall so that the adhesive on the back of the panel makes full contact with the wall at all points. Where a timber batten frame system has been fixed to the walls apply the beads of adhesive to the battens first rather than the back panel and then locate the panel in the same manner onto the adhesive / battens.
- Apply the same adhesive lines to the next panel, or battens, to be fitted and a small silicone bead along the upper section of the panel tongue of the next panel. Position the panel vertically and insert fully the tongue of the panel into the groove of the previously installed panel and again push the panel onto the wall or battens to fully position the panel. Wipe any excess silicone off the panel joint immediately.

If H type mid-joint trims are being used to cover panel joints the H joint profiles can be either be mechanically nailed where battens are installed or adhered using panel adhesive. The H joints must have a full silicone bead applied into both its recesses once fixed and before the panels are inserted. It may be necessary to locate the trim onto the R/H panel edge before pushing the panel onto the wall or batten adhesive and then fixing the trim in place.

In some cases it may be necessary to cut off the panel tongues or grooves before fitting the panel into any profiles used.

At wall corners use either the internal or external trims ensuring a full silicone bead is applied into the trim recesses prior to fixing the trim in place and locating the panel edges into them.

- Finish the installation of the panels by measuring and cutting the last panel to size. Finish and seal the final edge using PVC silicone sealant, and either fit an end U cap or scotia trim to the panel edge as required, prior to fixing to the final panel and end trim as one unit to the sub surface.
- Ensure all panel joints, bottom edges, sides and edges around sinks, baths, shower trays, shower units and any pipes or cut outs are fully sealed using PVC silicone sealant. The PVC panel warranty will be void and no product fault claims will be accepted, where a problem occurs due to incorrect or inappropriate sealing of joints or seal failure as a result an inappropriate or non recommended sealant being used.

## 3. CUTTING & HANDLING PANELS

- PVC Panels should be carefully cut using a fine-tooth blade hand-saw, decorative face up. Common sense safety precautions should be undertaken when handling the panels to avoid accidents. Gloves and eye protection should be worn when cutting the panels to minimize the risk of injury.

## 4. LIGHTING

PVC panels and profiles **should not be subjected to temperatures from any source in excess of 60 degrees C**. If the panels are subjected to temperatures in excess of 60 deg C then damage may occur to its surface and as such will invalidate your warranty. **Check with a suitably qualified electrician** if any doubts exist as to the suitability, in terms of type and heat output, of any lighting or heating units that are intended to be used on, or installed into, your PVC panelling.

- When fitting PVC Panels with cut outs onto plasterboard, the aperture in the plasterboard should have a radius of approximately 60mm greater than the aperture in the PVC Panel.

## 5. AFTERCARE AND MAINTENANCE

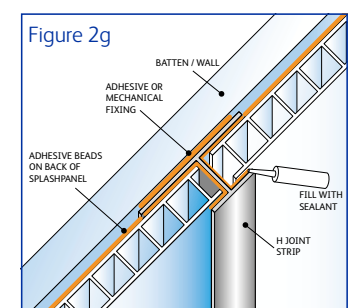
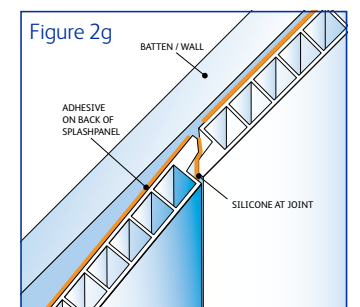
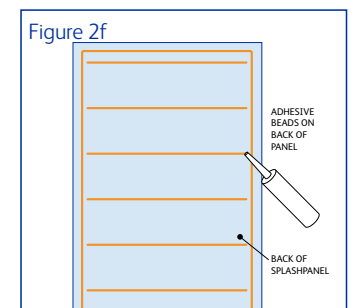
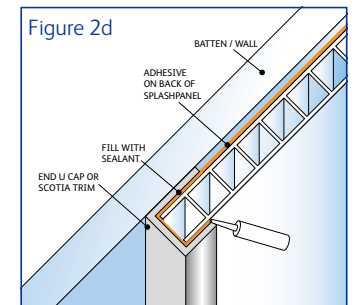
Once installed, your PVC Panels require only occasional ongoing maintenance. The panels should be cleaned using PVC Antibacterial Cleaner which is available via your PVC supplier.

**Do not use any abrasive scourers, abrasive agents or bleaches of any kind to clean this product.** PVC panels have an element of resistance to both artificial and natural Ultra Violet light however the **panels are not ultimately Ultra Violet light stable** and therefore fading of panels may occur over time where the panels are subject to direct sunlight.

To avoid and minimize this effect occurring it is recommended that curtains or blinds are used during periods of prolonged or intense sunlight.

## 6. WARRANTY

Your PVC panelling carries a five year domestic use limited manufacturing defect warranty. Please retain your product receipt as proof of purchase as this will be required should a product fault claim be made. A copy of the warranty is available via your PVC panelling supplier or can be downloaded from [www.panelstyle.co.uk](http://www.panelstyle.co.uk)



**\*NOTE!** A 'H' joint trim must be used at the first meeting joint of the 1200mm and 1000mm width panels.

# Splashpanel Narrow PVC wall panelling

## INSTALLATION, CARE & MAINTENANCE

info@panelstyle.co.uk | [www.panelstyle.co.uk](http://www.panelstyle.co.uk) | 0845 023 0374

Disclaimer. Due to variations in the photographic and printing process, colours shown in this brochure may vary from the actual product. It is advisable to refer to a product sample before making your purchase. We reserve the right to change the specification of these products without prior notification. E&OE.

PanelStyle